



Come home to the good life.

WIDELOT™ TOWNHOMES

The Mattamy Homes logo is centered within a white graphic of a fence. The fence consists of vertical posts and horizontal rails, with diagonal cross-bracing between the rails. The logo itself is an oval with a blue background and a white border. Inside the oval, the word "MATTAMY" is written in a large, white, serif font, and the word "homes" is written below it in a smaller, white, lowercase serif font.

MATTAMY
homes

A scenic view of a lake with a gazebo on the left, surrounded by trees and flowers in the foreground. The gazebo has a green roof and a white railing. The lake is calm, and the sky is blue with some clouds. In the foreground, there are yellow and purple flowers.

MILTON.
A Fine Lifestyle,
A Superb Setting.

Mill Pond, Millenium Gazebo, Milton



Milton is one of those great small towns you usually stumble upon on a Sunday drive. It rests, snuggled at the base of the Niagara Escarpment and instantly draws you back in time. The main street is historically preserved yet thriving with modern-day businesses and conveniences. On Saturday mornings, Spring to Fall, the main street is closed to traffic while local and not-so-local vendors set up the Farmer's Market. Thousands of people from near and far arrive to catch up on local gossip and pick up fresh produce. Milton is a town for all seasons and all reasons. It is surrounded by some of Ontario's best Conservation areas with miles of hiking, cross-country skiing and walking trails. It offers great schools, fine shopping and a complete range of family leisure activities anchored by a marvelous Community Centre that thrives all year. There are also many fine museums and art galleries that we won't mention specifically because they are best discovered first-hand, on a leisurely stroll through the Milton area. Milton is known for its friendly quality of life.

It is a fine place to live and raise a family because the country is right next door. And so is the city.



Niagara Escarpment



Hilton Falls, Milton

TRANSPORTATION

- 1 401
- 2 Steeles Ave.
- 3 Main Street
- 4 Derry Road
- 5 Britannia Rd
- 6 407
- 7 Fourth Line
- 8 Fifth Line
- 9 Thompson Road
- 10 Ontario St.
- 11 Bronte St.
- 12 Trafalgar Road

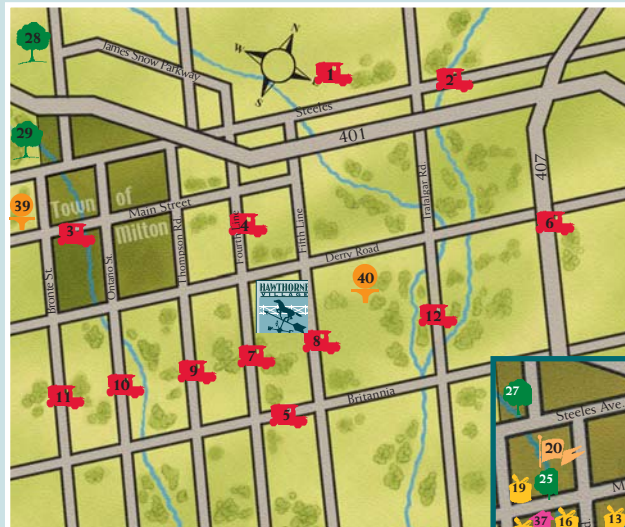
SHOPPING

- 13 Milton Mall
- 14 Southview Mall
- 15 Loblaws
- 16 Bergsma Paint Store
- 17 Farmers Market (Main St.)
- 18 LCBO (Main & Bronte)
- 19 Beer Store

RECREATION / GOLF CLUBS

- 20 John Tonelli Sports Centre
- 21 Milton Memorial Arena
- 22 Milton Leisure Centre

TOWN OF MILTON



PARKS

- 23 Laurier Park
- 24 Fairgrounds
- 25 Rotary Park
- 26 Robert Baldwin Park
- 27 Chris Hadfield Park
- 28 Hilton Falls Conservation
- 29 Kelso Conservation

SCHOOLS

- 30 Public Elementary School
- 31 Separate Elementary School
- 32 Public Secondary School
- 33 Separate Secondary School
- 41 Future Separate Elementary School
- 42 Future Public Elementary School
- 43 Public Secondary School



OTHER

- 34 Milton Go Station
- 35 E.C. Drury School for the Hearing Handicapped
- 36 Trillium School for the Learning Disabled
- 37 Town Hall



HOSPITALS

- 38 Milton District Hospital



GOLF CLUBS

- 39 Rattlesnake Point
- 40 Trafalgar Golf & Country Club



- There are many Private and Public Golf Courses that make full use of the interesting Escarpment terrain.
- Right in the town of Milton you'll find no less than 6 quality Day Care Centres.
- The public transit system is well-served by local buses and "GO" facilities.
- Faith is a vibrant part of the community experience in Milton. There are over 20 churches representing 11 Religions.



Trafalgar Golf Course, Milton

The image shows a row of modern, two-story houses in a suburban setting. The primary focus is a large brick house with a prominent front porch supported by white columns and a white railing. To its right is a smaller, two-story house with a similar porch design. The houses are set on a green lawn with a paved sidewalk and a road in the foreground. The sky is blue with some clouds.

The WideLot™ Style

WARM PLACES, UNIQUE SPACES.

Hawthorne Village Model Home Streetscape



Conventional Lot

Mattamy WideLot™

The moment you enter Hawthorne Village, you immediately see evidence of the many unique features that make this such a special place to live. Hawthorne Village is Canada's largest WideLot™ community, a place called home by more than 3,000 families. Naturally, in our Sales Centre, you will find the full story behind this unique community but the best way to see the community is to drive or walk around it. For starters, you will notice fewer homes per street, with the homes placed at various distances from the curb, which creates a very interesting streetscape. You will also notice that no two homes beside each other are alike. Mattamy offers a wide selection of elevations to further enhance individual character on the streets. The homes present a wide profile to the street and most offer front porches, which is the place to be on a gentle evening. Neighbours greet each other warmly and some stop out front for a while just to chat. Street traffic is lighter because there are fewer homes and the streets wind gently which encourages cars to drive slowly. Parkettes dot the community and serve as natural gathering places where kids play. Biking and walking paths are scattered throughout the community. Hawthorne Village offers all of the gracious home styles and quality construction that people expect from

Canada's largest builder of WideLot™ homes. And when the sun drops in behind the escarpment, at the end of another day, you quickly realize that Hawthorne Village is a very special place to live.



MATTAMY HOMES. Designed For The Way People Live.



Mattamy homes are carefully constructed environments that are mindful of family traffic patterns. The homes offer a sense of openness and natural light streams into the homes through oversized windows. The net result is a naturally bright, spacious and cheerful home even in the dullest winter months.

Kitchen and family room are designed side by side in a Mattamy WideLot™ home. This allows active families to stay well connected whether working in the kitchen or relaxing in the family room. These are homes that rely on the old phrase, a place for everything and everything in its place. Many homes offer window seats and linen closets are exactly where they should be. Some models even offer media niches so the home entertainment system doesn't intrude into the living space. Mattamy's collection of

WideLot™ homes in Hawthorne Village is a welcome difference from the norm. They are well above average in style, design and quality. And they are designed for a very practical world.





56' WideLot™ Model Home, The Tothburg II



Why We Chose Mattamy.



"We looked forever until we came across Mattamy in Windsong. As soon as we laid eyes on it, we knew that the 2,600 sq.ft, four bedroom Mattamy home was the perfect design for us. When we got to the Mattamy Design Centre, we were mesmerized by the selection. Mattamy offers unbelievable standard features. Nowhere will you find as many cupboards or tiles to choose from. When you're being careful with money, it's great having this much standard selection."

Nick & Niki Mitsopoulos



"We knew Mattamy was one of the top builders, but we didn't know whether we could afford one of their homes," Lalia says. "In fact, the price was great, and because we were so content with the location, we bought a slightly larger home than we originally planned. Compared to Toronto, we feel we got more bang for our buck, especially given the luxury features that were included as standards in the home"

Brian Willard & Lalia Rosario



"We wanted a home with plenty of elbow room because we love to entertain. Our Mattamy home has a huge kitchen that opens directly to the Great Room which will be great for family gatherings and parties. Mattamy is very willing to allow personalization. Mattamy accommodated every change we wanted."

Raymond & Karen Chun



"Barry and I have only a four minute commute, plus the new school being built here is the same one the kids would have changed to, had we stayed in our last home. As for the home itself, it didn't look this big on paper. The master ensuite is huge. There's stadium seating around the tub, and the kids like the fact that they can sit on the plant ledge."

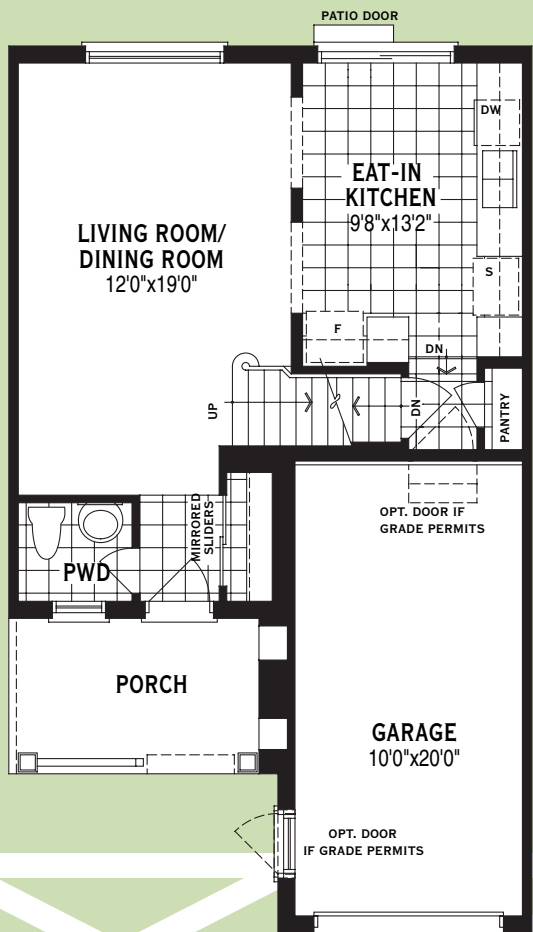
Barb, Barry, Ryan & Zachary Bembridge

The Amesbury 1130 *Sq. Ft.*

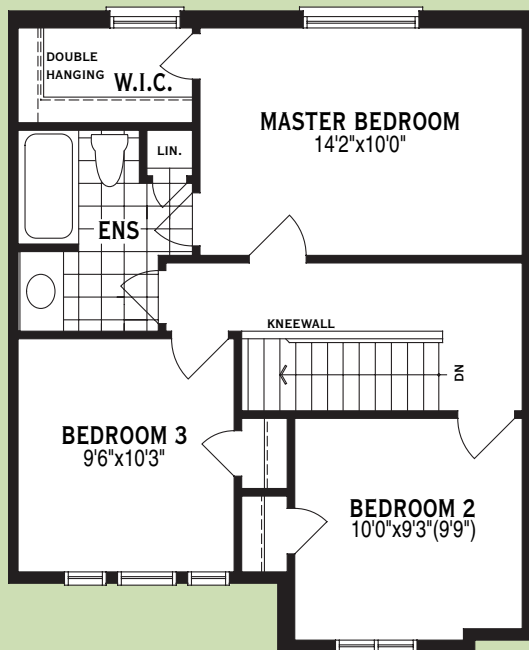




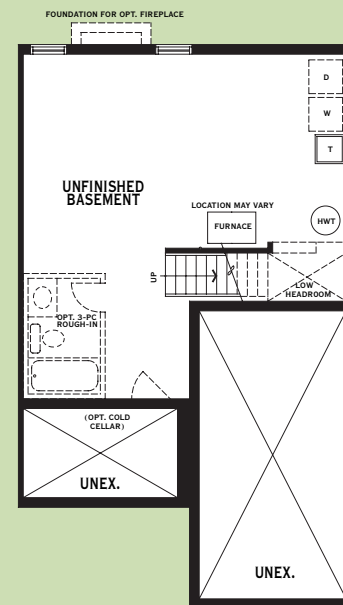
Partial Ground Floor Plan w/ Opt. Fireplace



Ground Floor Plan



Second Floor Plan



Basement Floor Plan



WideLot™ Townhome
 HVTH71
 The Amesbury
 1130 Sq.Ft.

All illustrations are artist's concept. Specifications, terms and conditions are subject to change without notice. These floor plans and room dimensions apply to elevation 'A' of this model type. Note that plans and room dimensions may vary according to elevation. Please consult your sales representative. E.&O.E. Copyright 2005— Maltamy Homes Limited.

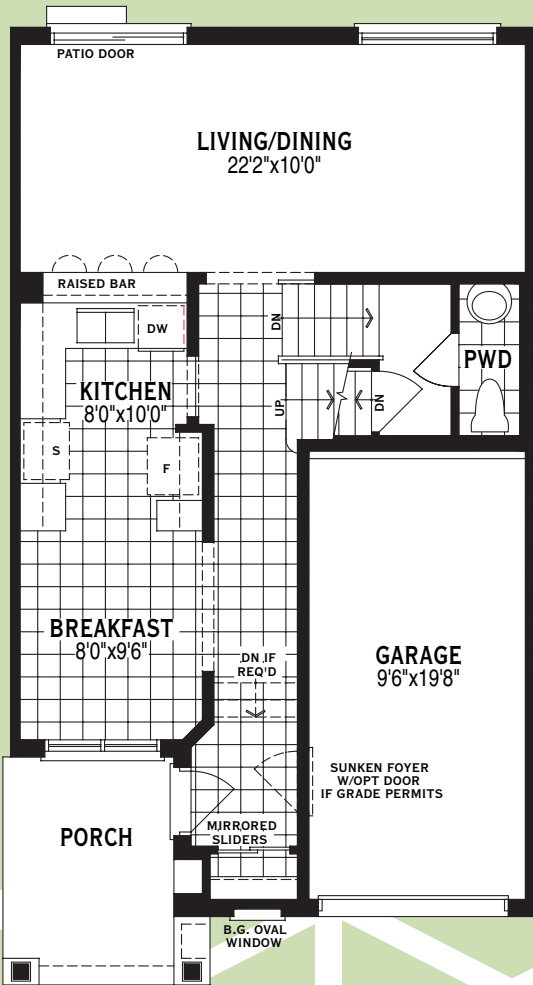
The Bolton

1275 Sq. Ft.

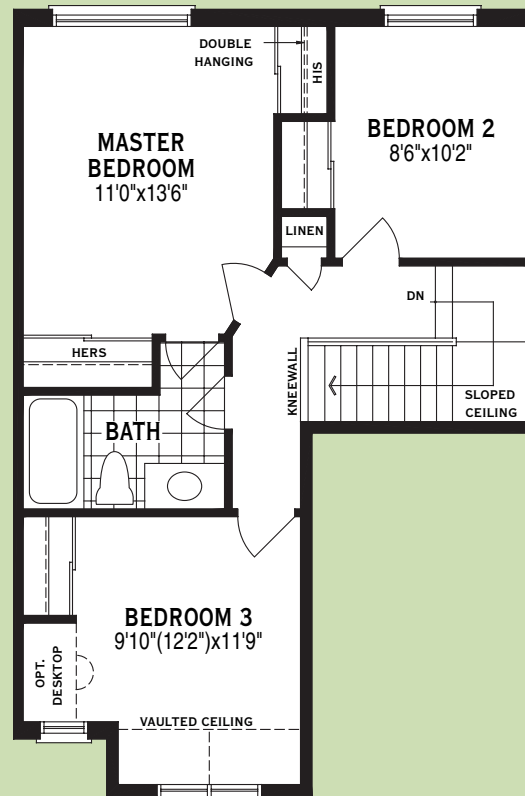




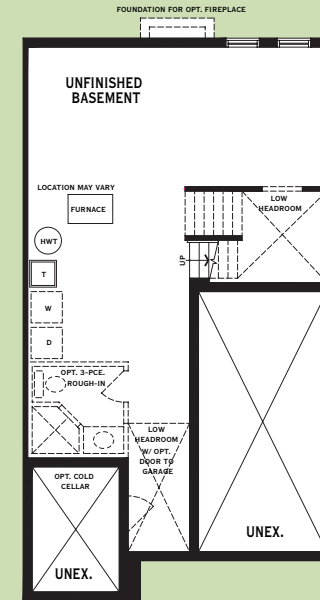
Partial Ground Floor Plan w/ Opt. Fireplace



Ground Floor Plan



Second Floor Plan



Basement Floor Plan

All illustrations are artist's concept. Specifications, terms and conditions are subject to change without notice. These floor plans and room dimensions apply to elevation 'A' of this model type. Note that plans and room dimensions may vary according to elevation. Please consult your sales representative. E.&O.E. Copyright 2005— Maltamy Homes Limited.



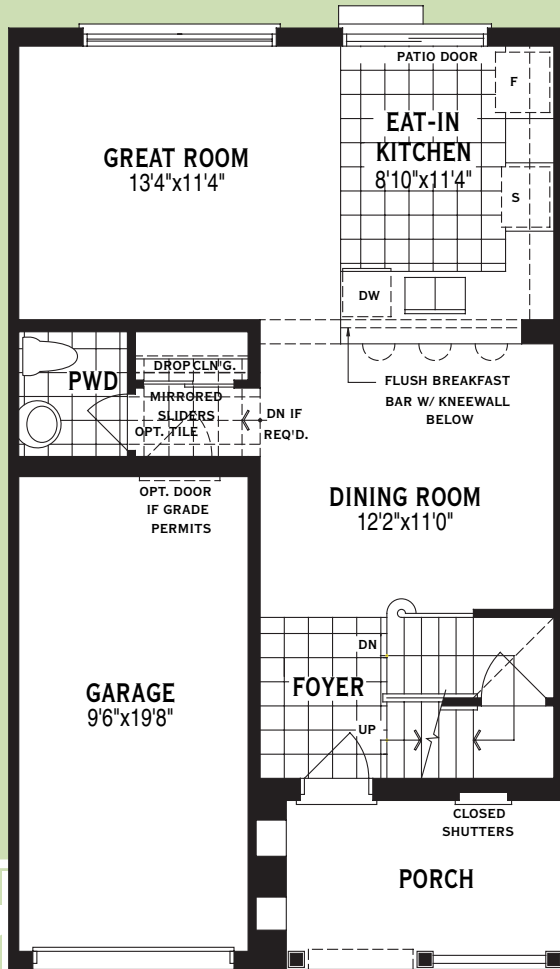
WideLot™ Townhome
 HVTH72
 The Bolton
 1275 Sq.Ft.

The Emery 1370 *Sq. Ft.*

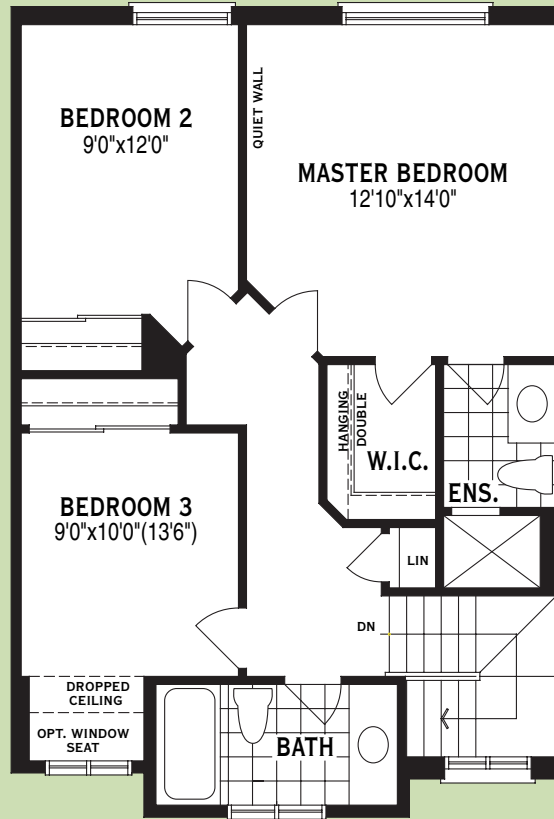




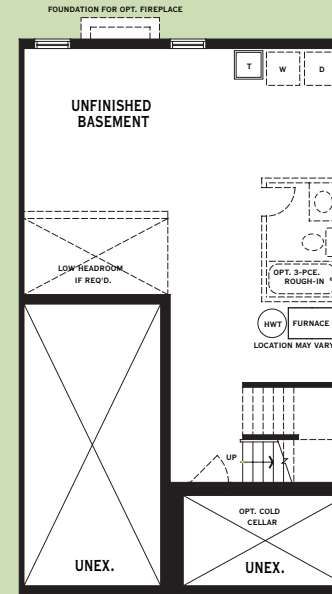
Partial Ground Floor Plan w/ Opt. Fireplace



Ground Floor Plan



Second Floor Plan



Basement Floor Plan

All illustrations are artist's concept. Specifications, terms and conditions are subject to change without notice. These floor plans and room dimensions apply to elevation 'A' of this model type. Note that plans and room dimensions may vary according to elevation. Please consult your sales representative. E.&O.E. Copyright 2005— Maltamy Homes Limited.

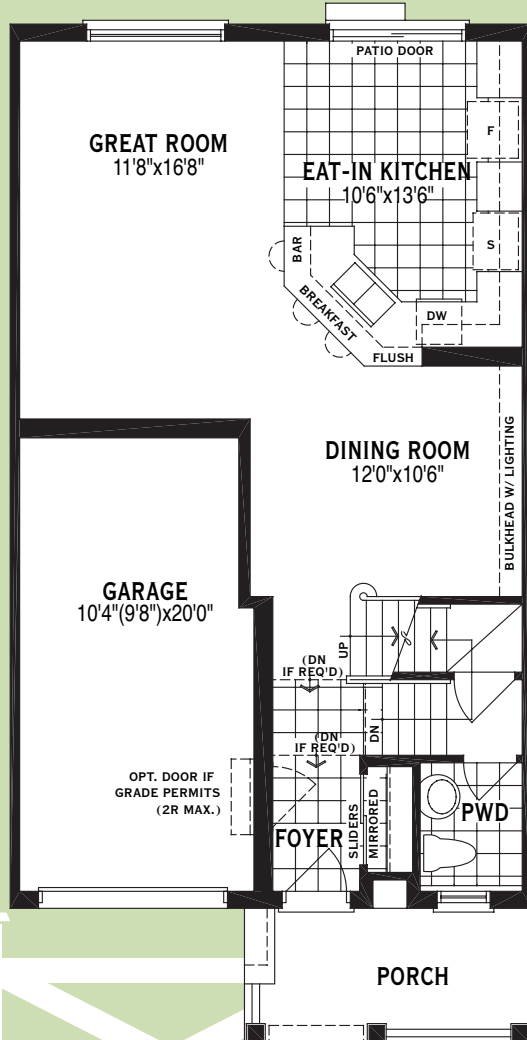


WideLot™ Townhome
HVTH73
The Emery
1370 Sq. Ft.

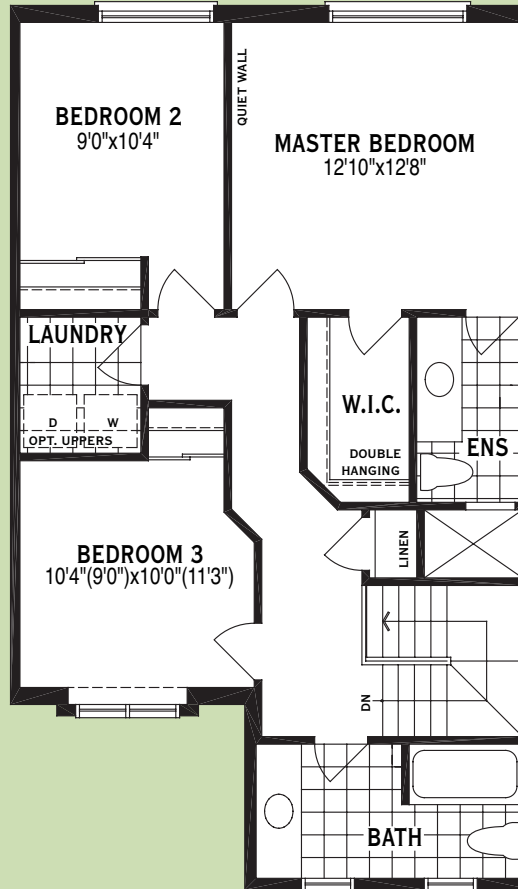
The Hillsview 1510 Sq. Ft.



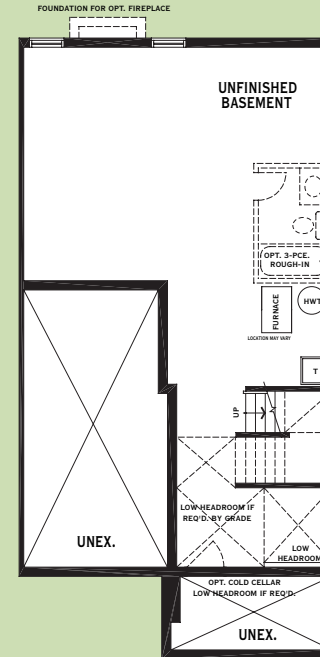
Partial Ground Floor Plan w/ Opt. Fireplace



Ground Floor Plan



Second Floor Plan



Basement Floor Plan



WideLot™ Townhome
 HVTH74
 The Hillsview
 1510 Sq.Ft.

All illustrations are artist's concept. Specifications, terms and conditions are subject to change without notice. These floor plans and room dimensions apply to elevation 'A' of this model type. Note that plans and room dimensions may vary according to elevation. Please consult your sales representative. E.&O.E. Copyright 2005— Maltamy Homes Limited.

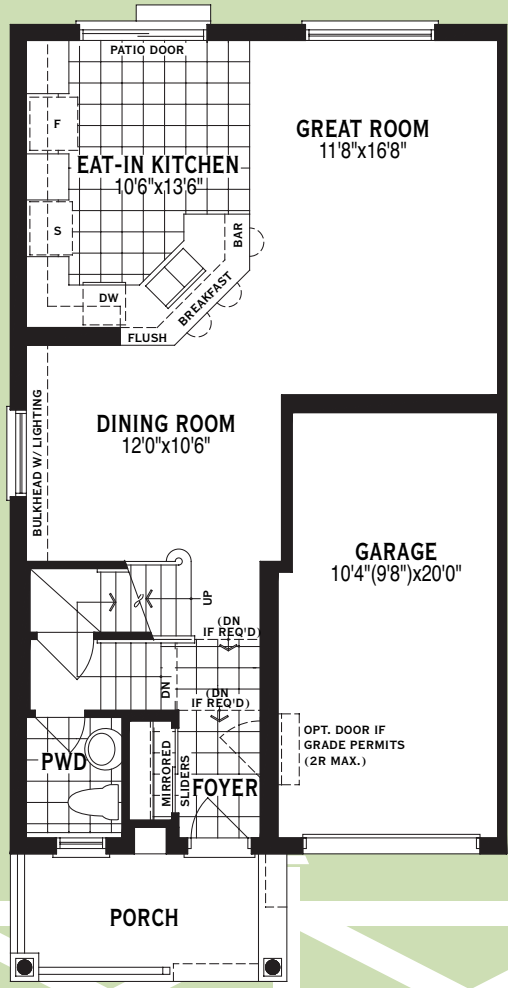
The Hillsview End 1510 Sq. Ft.



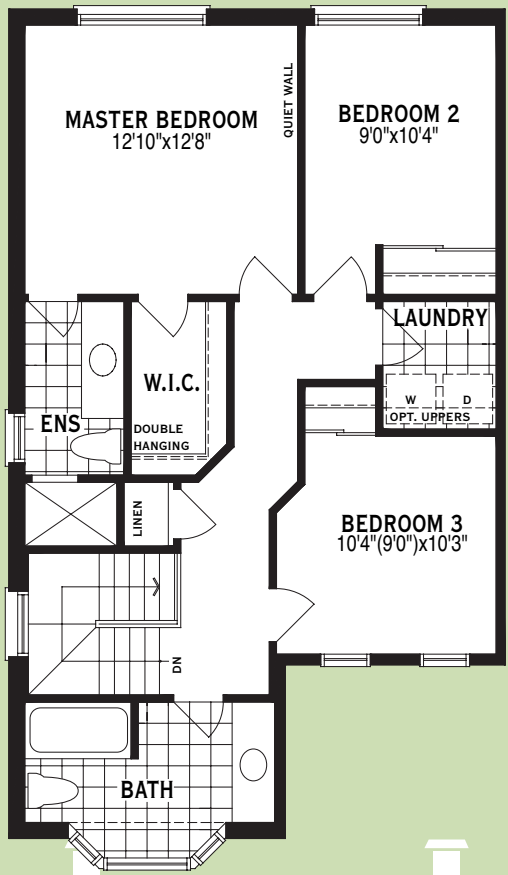
Elevation 'D' Only Available As An End Model



Partial Ground Floor Plan w/ Opt. Fireplace

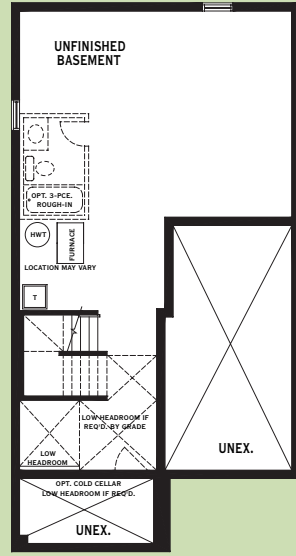


Ground Floor Plan



Second Floor Plan

FOUNDATION FOR OPT. FIREPLACE



Basement Floor Plan

All illustrations are artist's concept. Specifications, terms and conditions are subject to change without notice. These floor plans and room dimensions apply to elevation 'D' of this model type. Note that plans and room dimensions may vary according to elevation. Please consult your sales representative. E.&O.E. March, 2005 Copyright 2005— Mattamy Homes Limited.

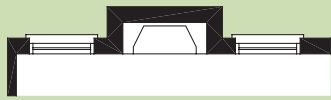


WideLot™ Townhome
 HVTH74E
 The Hillsview End
 1510 Sq. Ft.

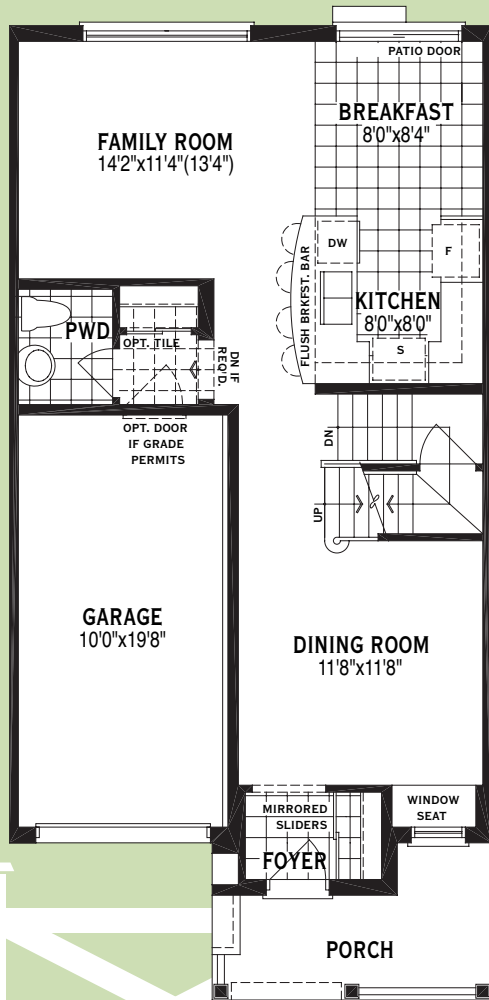
The Lewiston

1585 Sq. Ft.

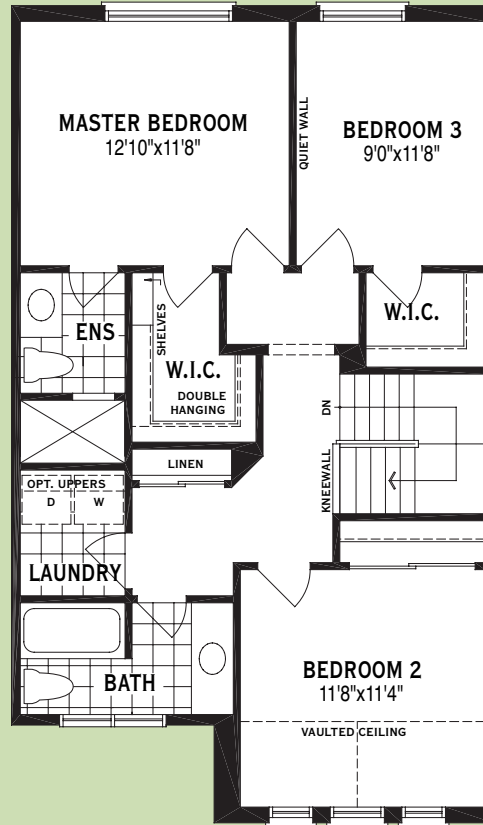




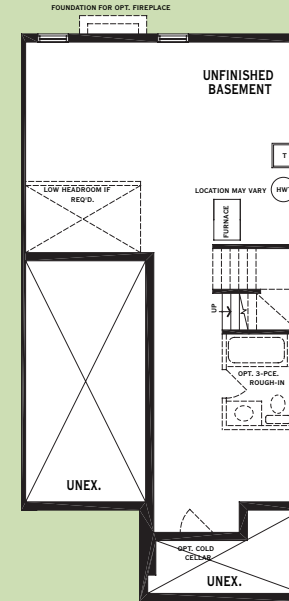
Partial Ground Floor Plan w/ Opt. Fireplace



Ground Floor Plan



Second Floor Plan



Basement Floor Plan



WideLot™ Townhome
 HVTH75
 The Lewiston
 1585 Sq.Ft.

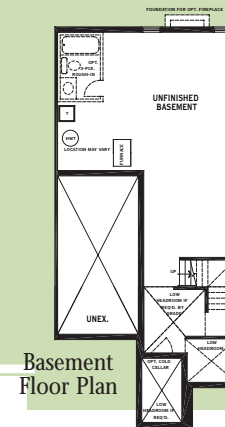
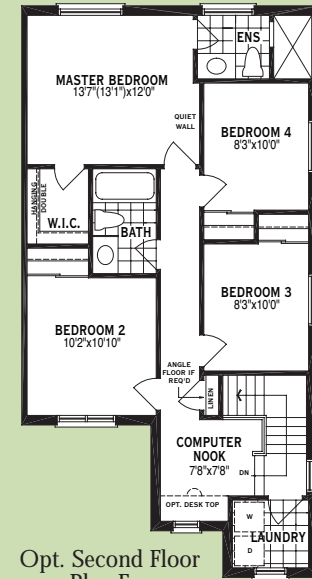
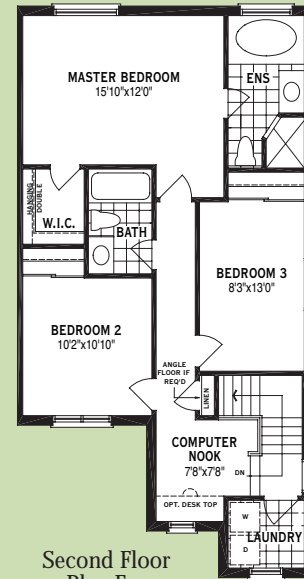
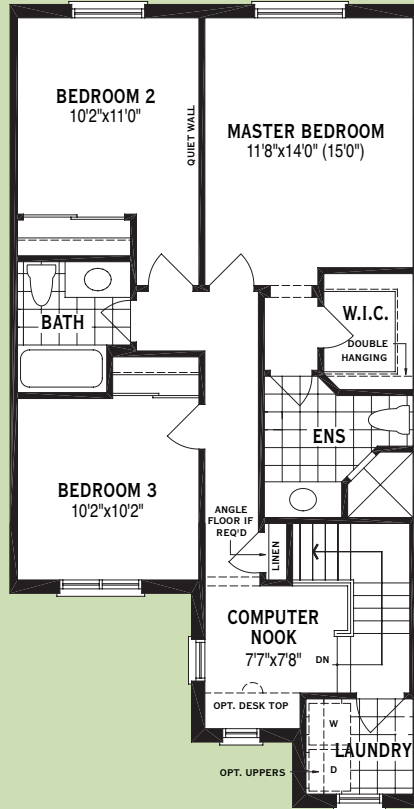
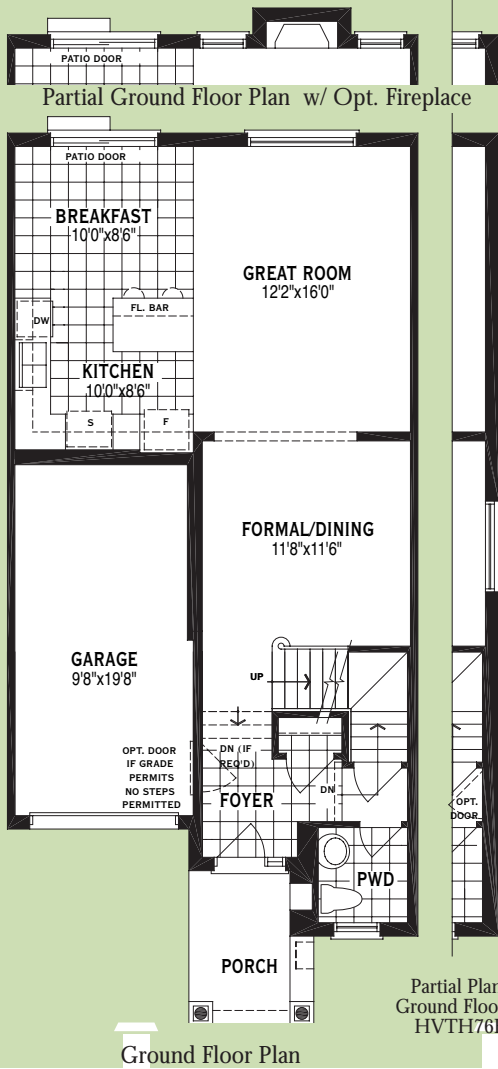
All illustrations are artist's concept. Specifications, terms and conditions are subject to change without notice. These floor plans and room dimensions apply to elevation 'A' of this model type. Note that plans and room dimensions may vary according to elevation. Please consult your sales representative. E.&O.E. Copyright 2005— Maltamy Homes Limited.

The Linwell

1652 Sq. Ft.



Elevation 'A' Only Available As An Interior Model



Partial Plan Of Ground Floor Plan HVTH76E 'B'



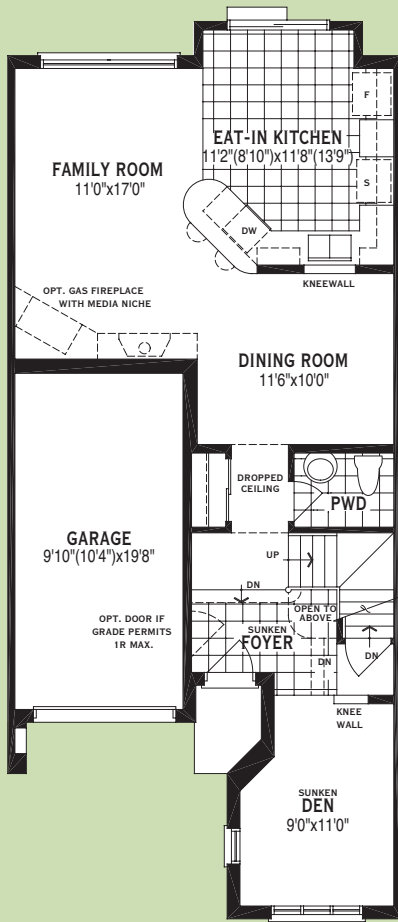
WideLot™ Townhome
 HVTH76 & HVTH76E
 The Linwell &
 The Linwell End
 1652 Sq. Ft.

All illustrations are artist's concept. Specifications, terms and conditions are subject to change without notice. These floor plans and room dimensions apply to elevation 'B' of this model type. Note that plans and room dimensions may vary according to elevation. Please consult your sales representative. E.&O.E. March, 2005 Copyright 2005— Mattamy Homes Limited.

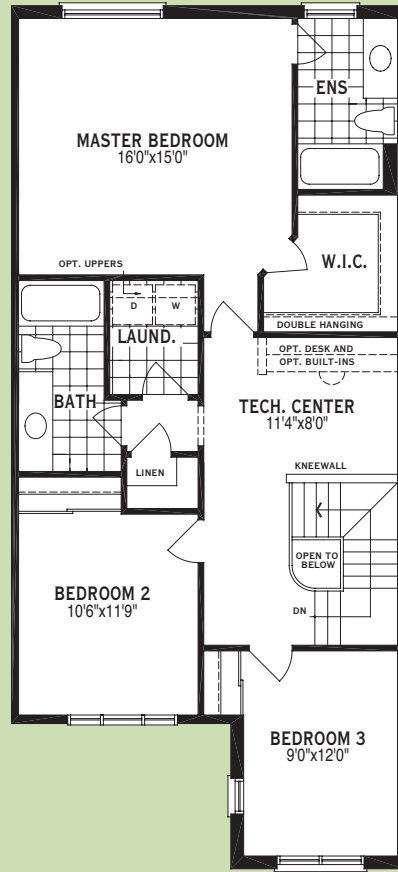
The Oakwood

1873 Sq. Ft.

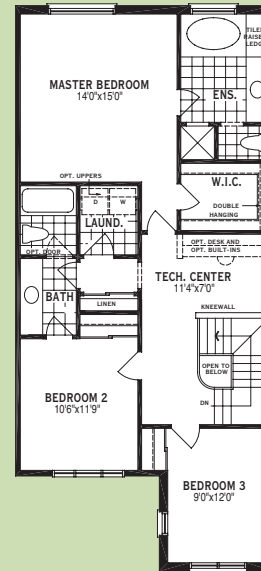




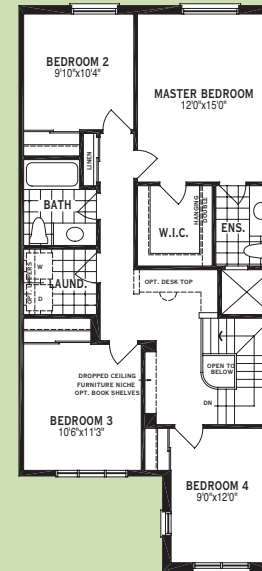
Ground Floor Plan



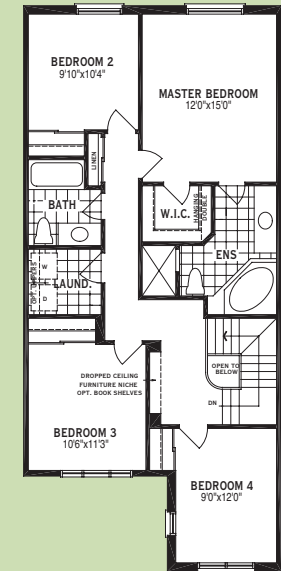
Second Floor Plan



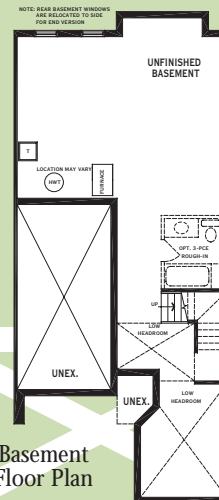
Opt. Second Floor Plan
3 Bedroom
w/Upgraded Ensuite



Opt. Second Floor Plan
4 Bedroom



Opt. Second Floor Plan
4 Bedroom
w/Upgraded Ensuite



Basement
Floor Plan



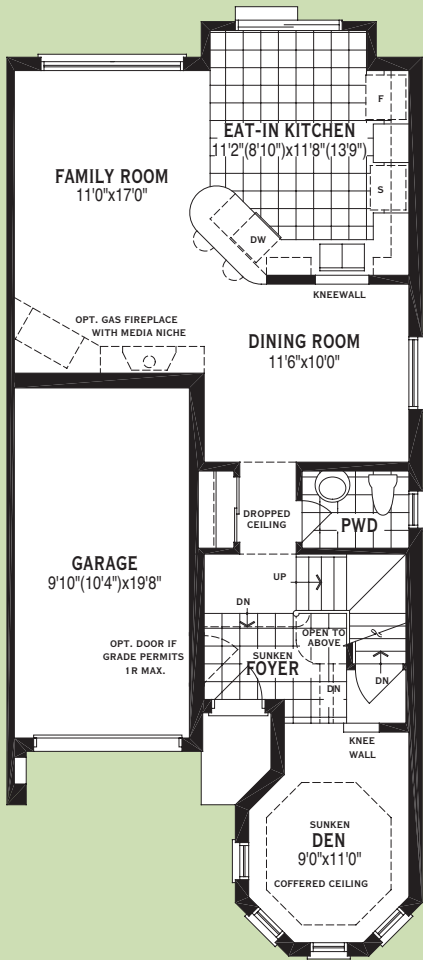
WideLot™ Townhome
HVTH77
The Oakwood
1873 Sq.Ft.

All illustrations are artist's concept. Specifications, terms and conditions are subject to change without notice. These floor plans and room dimensions apply to elevation 'A' of this model type. Note that plans and room dimensions may vary according to elevation. Please consult your sales representative. E.&O.E. Copyright 2005— Maltamy Homes Limited.

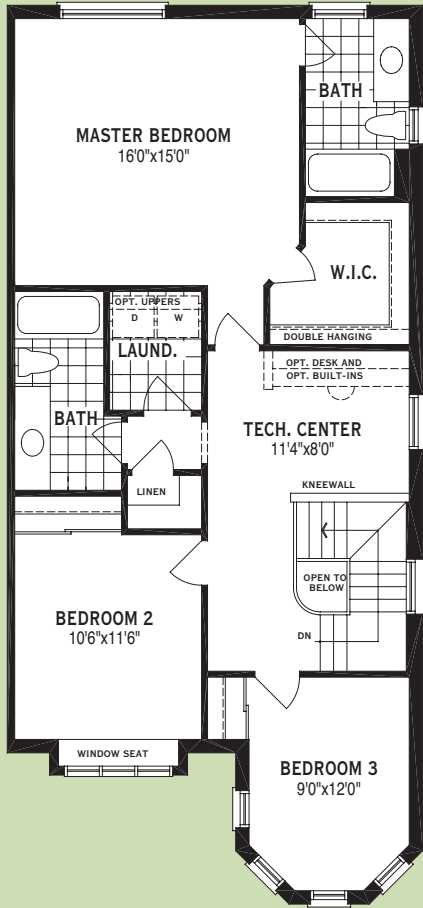
The Oakwood End

1873 Sq. Ft.

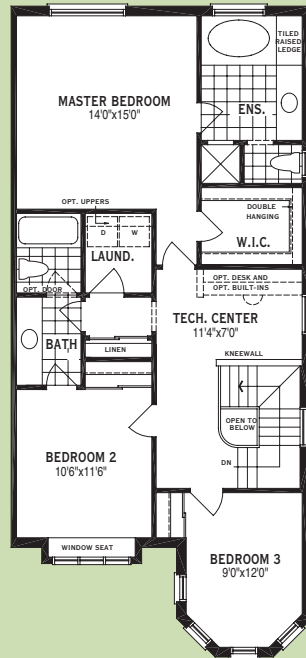




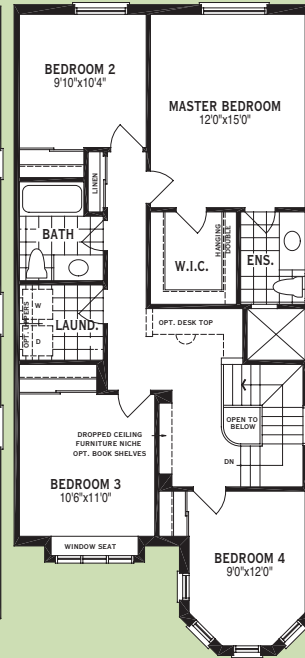
Ground Floor Plan



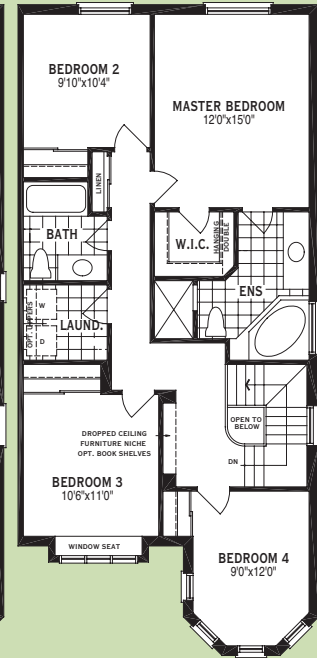
Second Floor Plan



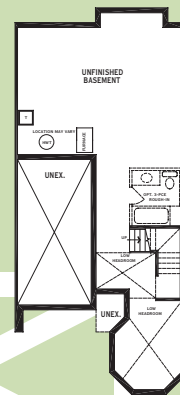
Opt. Second Floor Plan
3 Bedroom
w/Upgraded Ensuite



Opt. Second Floor Plan
4 Bedroom



Opt. Second Floor Plan
4 Bedroom
w/Upgraded Ensuite



Basement Floor Plan



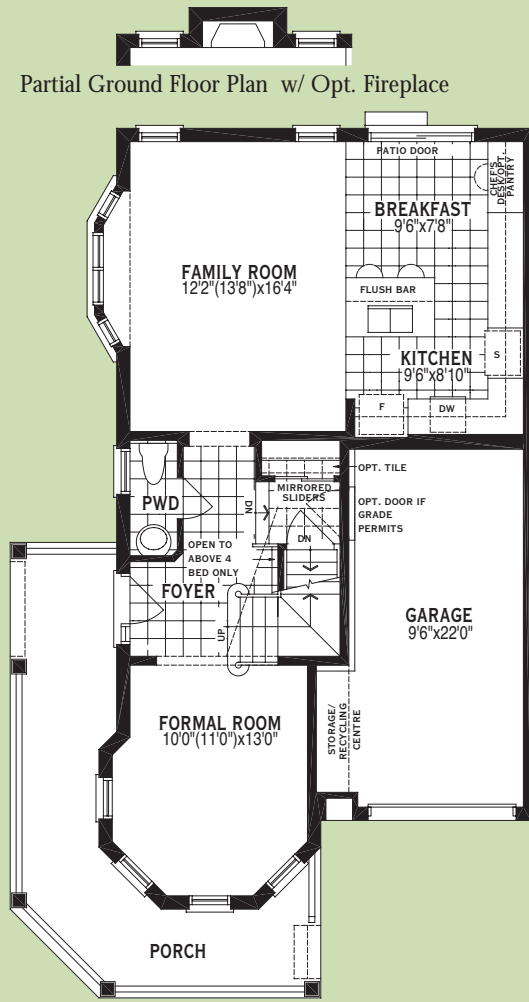
WideLot™ Townhome
HVTH77E
The Oakwood End
1873 Sq.Ft.

All illustrations are artist's concept. Specifications, terms and conditions are subject to change without notice. These floor plans and room dimensions apply to elevation 'B' of this model type. Note that plans and room dimensions may vary according to elevation. Please consult your sales representative. E.O.E. March, 2005 Copyright 2005— Mattamy Homes Limited.

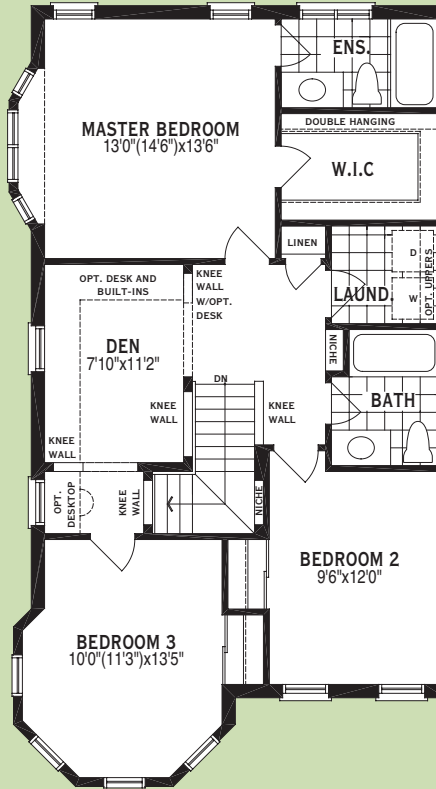
The Westgate Corner 1717 Sq. Ft.



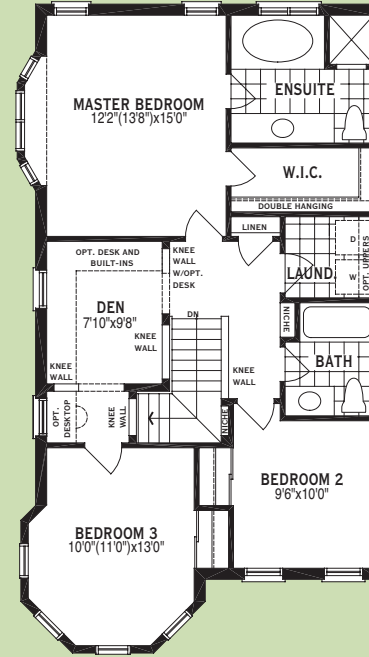
Partial Ground Floor Plan w/ Opt. Fireplace



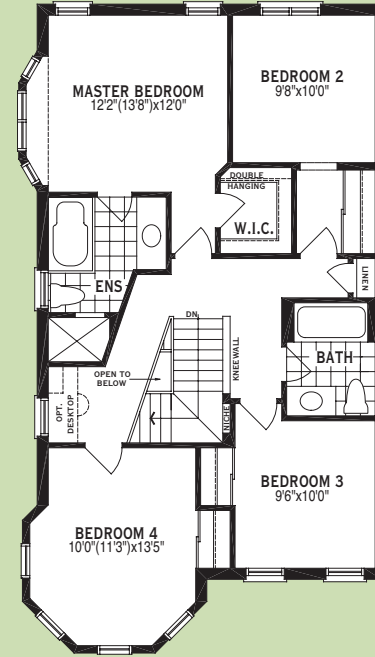
Ground Floor Plan



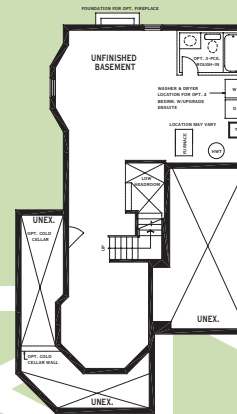
Second Floor Plan



Opt. Second Floor Plan
3 Bedroom w/Den & Upgraded Ensuite



Opt. Second Floor Plan
4 Bedroom w/Upgraded Ensuite



Basement Floor Plan



WideLot™ Townhome
HVTH78C
The Westgate Corner
1717 Sq.Ft.

All illustrations are artist's concept. Specifications, terms and conditions are subject to change without notice. These floor plans and room dimensions apply to elevation 'A' of this model type. Note that plans and room dimensions may vary according to elevation. Please consult your sales representative. E.&O.E. Copyright 2005— Maltamy Homes Limited.



The Journey Toward A New Home.

The largest purchase you will make in your lifetime is a new home.

Homebuilding is a journey of many steps.

We believe that journey is much more fulfilling and enjoyable if we take it step-by-step, together.

We hope the information in this brochure will be useful in helping you make the first important step; choosing a builder.

We would be honoured if you entrusted us with the creation of your new home.

Thank You

